

# 2008 DEMOGRAPHIC PROFILE

# Centre County

**Population: 143,015**

**Median Age: 30**

**Average Household Income: \$58,329**

**Per Capita Income: \$21,531**

## Population Age 16+

**Non Labor Force**  
40.62%

not working nor seeking employment

49,224

**Labor Force**  
59.38%

employed or seeking employment

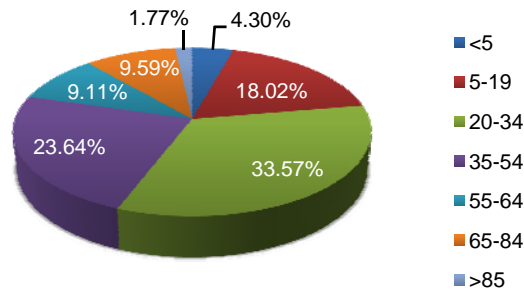
Civilian Employed  
66,516

Civilian Unemployed  
5,394

## Educational Attainment

Population 25+	88,429
Less than 9th Grade	2.73%
9th to 12th No Diploma	4.07%
High School Graduate	32.07%
Some College, No Degree	10.08%
Associate Degree	9.54%
Bachelor's Degree	20.09%
Graduate or Professional Degree	21.43%
% High School Graduate +	93.21%
% Bachelor's Degree +	41.52%

## Population by Age



## Top Migratory Counties

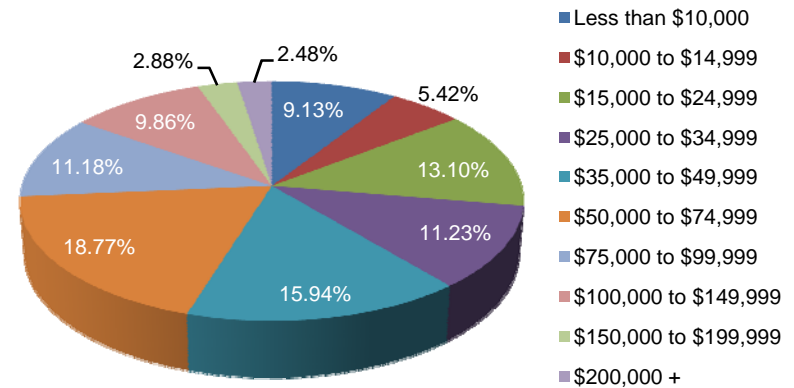
	In-Migration	Out-Migration
Foreign - Other flows	523	Clearfield, PA 269
Clearfield, PA	322	Clinton, PA 202
Clinton, PA	238	Allegheny, PA 176
Blair, PA	200	Blair, PA 139
Huntingdon, PA	127	Huntingdon, PA 127
<b>Total for county</b>	<b>5,781</b>	<b>Total for county 5,603</b>

Source: Economic Modeling Specialists, Inc., March 2009, for the 2006 time period, based on data from the Internal Revenue Service

## Race and Ethnicity

American Indian or Alaska Native Population	0.10%
Asian Population	5.71%
Black Population	2.84%
Hawaiian or Pacific Islander Population	0.12%
Multi-race Population	1.32%
Other Race Population	0.92%
White Population	88.98%
Hispanic Population	2.16%
Non Hispanic Population	97.84%

## Household Income



Central Pennsylvania Workforce Development Corp.  
1610 Industrial Boulevard, Suite 500 A  
Lewisburg, PA 17837  
570.522.0600 (P)  
570.522.0805 (F)