

# 2008 DEMOGRAPHIC PROFILE

# Clinton County

**Population: 36,859**

**Median Age: 38**

**Average Household Income: \$47,863**

**Per Capita Income: \$20,535**

## Population Age 16+

**Non Labor Force**  
41.40%

not working nor seeking employment

12,434

**Labor Force**  
58.60%

employed or seeking employment

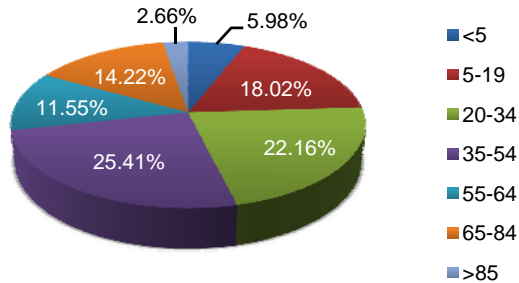
Civilian Employed  
16,553

Civilian Unemployed  
1,032

### Educational Attainment

Population 25+	24,985
Less than 9th Grade	4.83%
9th to 12th No Diploma	13.94%
High School Graduate	48.37%
Some College, No Degree	12.45%
Associate Degree	6.75%
Bachelor's Degree	8.61%
Graduate or Professional Degree	5.05%
% High School Graduate +	81.23%
% Bachelor's Degree +	13.66%

### Population by Age



### Top Migratory Counties

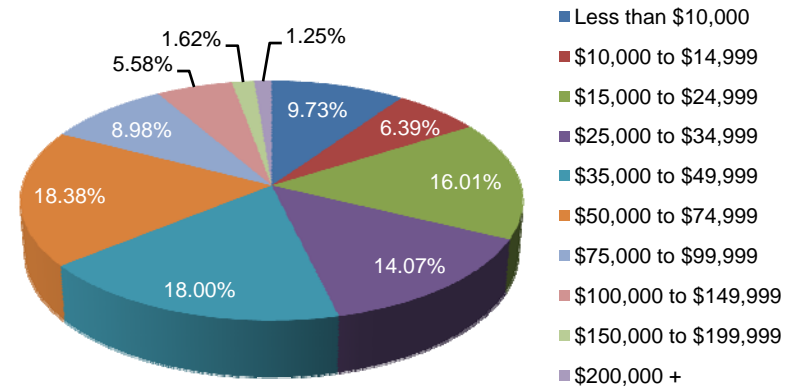
	In-Migration	Out-Migration
Lycoming, PA	360	Lycoming, PA 309
Centre, PA	202	Centre, PA 238
Foreign - Other flows	24	Northumberland, PA 20
York, PA	20	Lancaster, PA 18
Union, PA	18	Blair, PA 12
<b>Total for county</b>	<b>1,229</b>	<b>Total for county 1,201</b>

Source: Economic Modeling Specialists, Inc., March 2009, for the 2006 time period, based on data from the Internal Revenue Service

### Race and Ethnicity

American Indian or Alaska Native Population	0.11%
Asian Population	0.42%
Black Population	0.55%
Hawaiian or Pacific Islander Population	0.04%
Multi-race Population	0.54%
Other Race Population	0.16%
White Population	98.19%
Hispanic Population	0.94%
Non Hispanic Population	99.06%

### Household Income



Central Pennsylvania Workforce Development Corp.  
1610 Industrial Boulevard, Suite 500 A  
Lewisburg, PA 17837  
570.522.0600 (P)  
570.522.0805 (F)