

2008 DEMOGRAPHIC PROFILE

Mifflin County

Population: 45,730

Median Age: 41

Average Household Income: \$47,379

Per Capita Income: \$20,737

Population Age 16+

Non Labor Force
41.06%

not working nor seeking employment

15,073

Labor Force
58.94%

employed or seeking employment

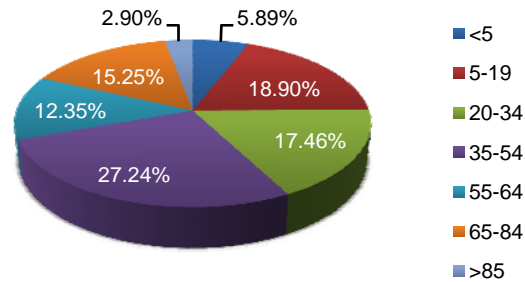
Civilian Employed
20,746

Civilian Unemployed
892

Educational Attainment

Population 25+	31,932
Less than 9th Grade	8.39%
9th to 12th No Diploma	13.30%
High School Graduate	52.62%
Some College, No Degree	10.27%
Associate Degree	4.22%
Bachelor's Degree	7.19%
Graduate or Professional Degree	4.01%
% High School Graduate +	78.31%
% Bachelor's Degree +	11.20%

Population by Age



Top Migratory Counties

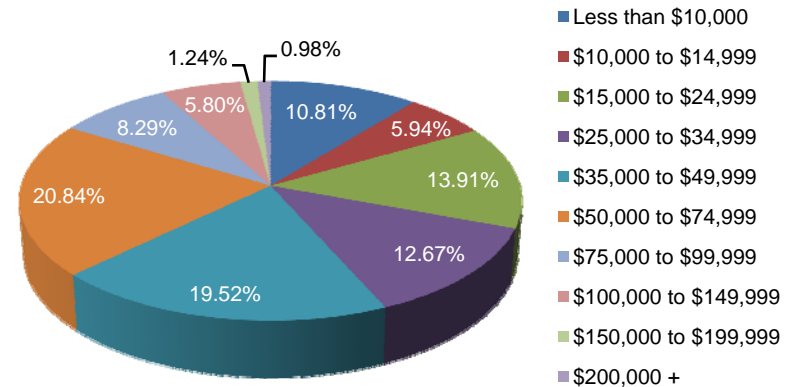
	In-Migration	Out-Migration
Huntingdon, PA	139	Huntingdon, PA 178
Juniata, PA	115	Juniata, PA 98
Centre, PA	107	Centre, PA 87
Snyder, PA	43	Dauphin, PA 57
Dauphin, PA	41	Snyder, PA 48
Total for county	1,065	Total for county 1,152

Source: Economic Modeling Specialists, Inc., March 2009, for the 2006 time period, based on data from the Internal Revenue Service

Race and Ethnicity

American Indian or Alaska Native Population	0.08%
Asian Population	0.31%
Black Population	0.51%
Hawaiian or Pacific Islander Population	0.01%
Multi-race Population	0.45%
Other Race Population	0.19%
White Population	98.45%
Hispanic Population	0.79%
Non Hispanic Population	99.21%

Household Income



Central Pennsylvania Workforce Development Corp.
1610 Industrial Boulevard, Suite 500 A
Lewisburg, PA 17837
570.522.0600 (P)
570.522.0805 (F)